

Today's plan

- Introduction
- Who are we?
- What are the current entitlements?
- What are the proposed changes, and why?
- An extraordinary benefit...
- Next steps

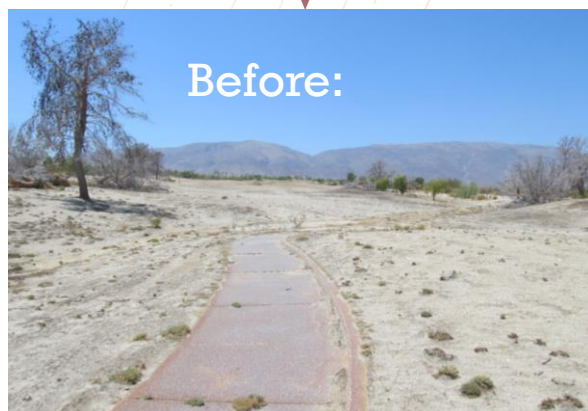
Rams Hill: A Part of the Borrego Community



Who is the sponsor?

T2 Borrego LLC

- T2 Borrego LLC acquired Rams Hill in 2013 after the golf course had been abandoned
- We have since turned the course around, and it is now ranked as one of California's best public courses
- We have raised wages, created year-round jobs, and offer ESL and college scholarships to our teammates
- We installed a 1MW solar array in 2015
- We are Partners with the Anza Borrego Foundation
- We are an active member of the Borrego community



What is the project?

Rams Hill Community

- A 1,570 home planned community with commercial uses including a hotel and golf courses
- 264 homes exist today, surrounding the golf course;
- All existing homes and commercial areas have BWD water and sewer service
- Specific Plan first approved in 1980
- We own vacant lots, the course, and surrounding land
- Rams Hill is the only project that is shovel ready, not in the flood plain, and is connected to public sewer system



Current 1980s Plan



Proposed Plan

- Residential uses (1,570 homes, approx. 1,300 unbuilt)
- Commercial uses
- Golf course uses
- Dedicated open space, on-site

- No change in number; only a change in placement
- As above
- As above
- Increased by 10% and relocated partially off-site



Extraordinary Public Benefits

Attainable / Workforce Housing



- Homebuyer Education and Financial Literacy
- Fee Simple Home Ownership
- Homes for Rent Program

What are the next steps?

Summary

- We will submit County forms to the BWD
- We will cover costs for consultant review
- We will fund necessary improvements to the systems
- We will provide required water rights to the BWD
- BWD has requested an MOU for a future agreement between BWD and Rams Hill
- We are happy to answer any questions

Thank you for your hard work and cooperation to date!

